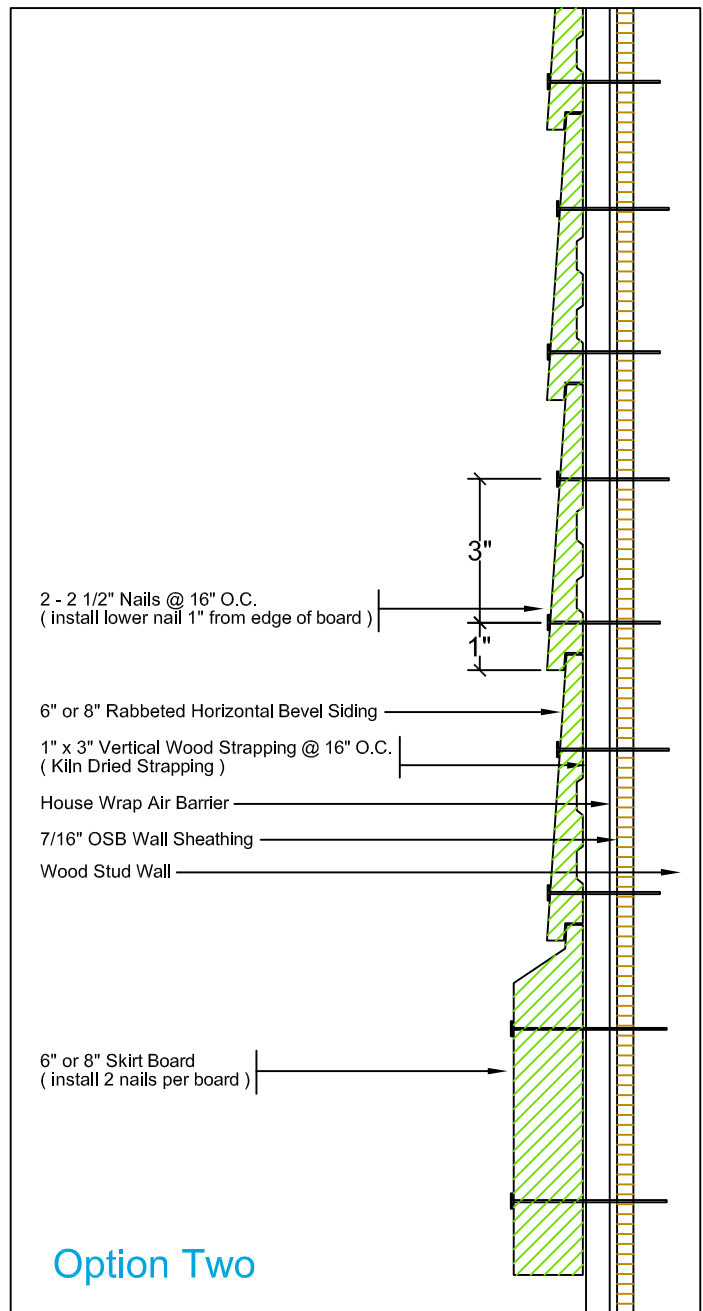
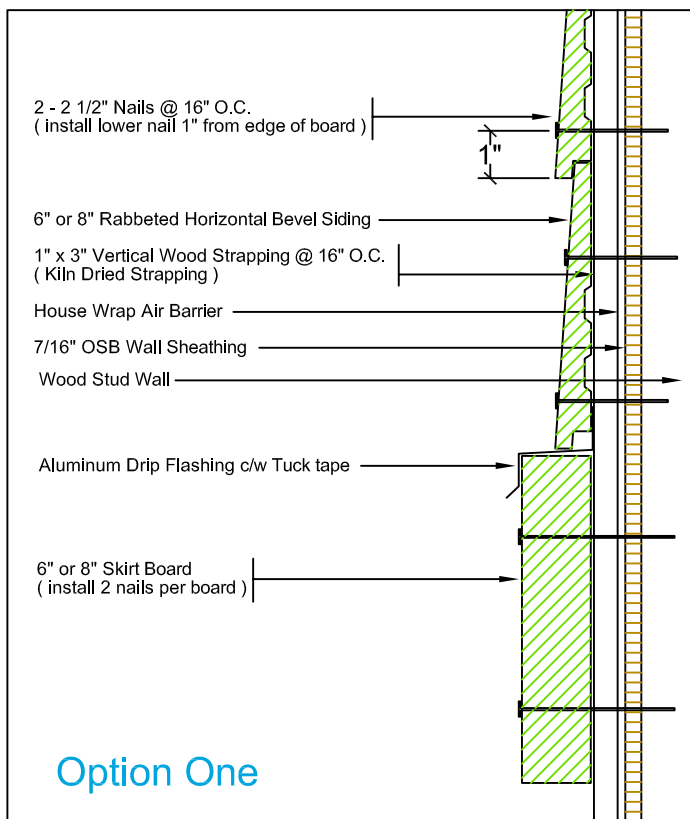
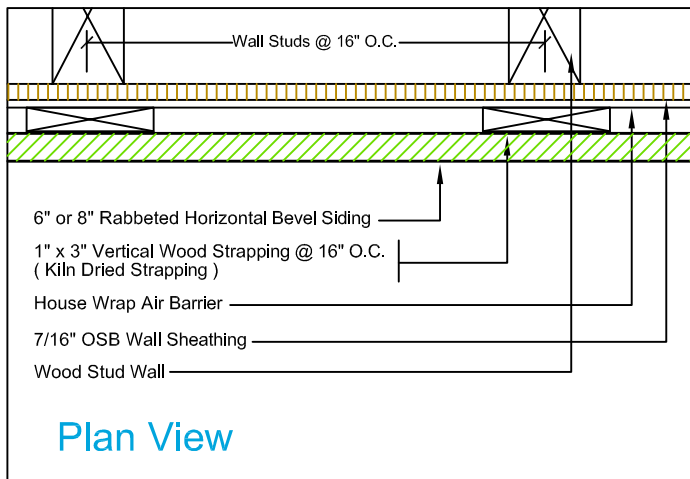


GemThane Value Plus Series (6" + 8" Horizontal Wood Siding)

6" Cove or Rabbeted Bevel, V - Joint Siding (1 Nail @ 1" from edge)

8" Cove or Rabbeted Bevel, V - Joint Siding (2 Nail @ 1" from edge + 3" apart)

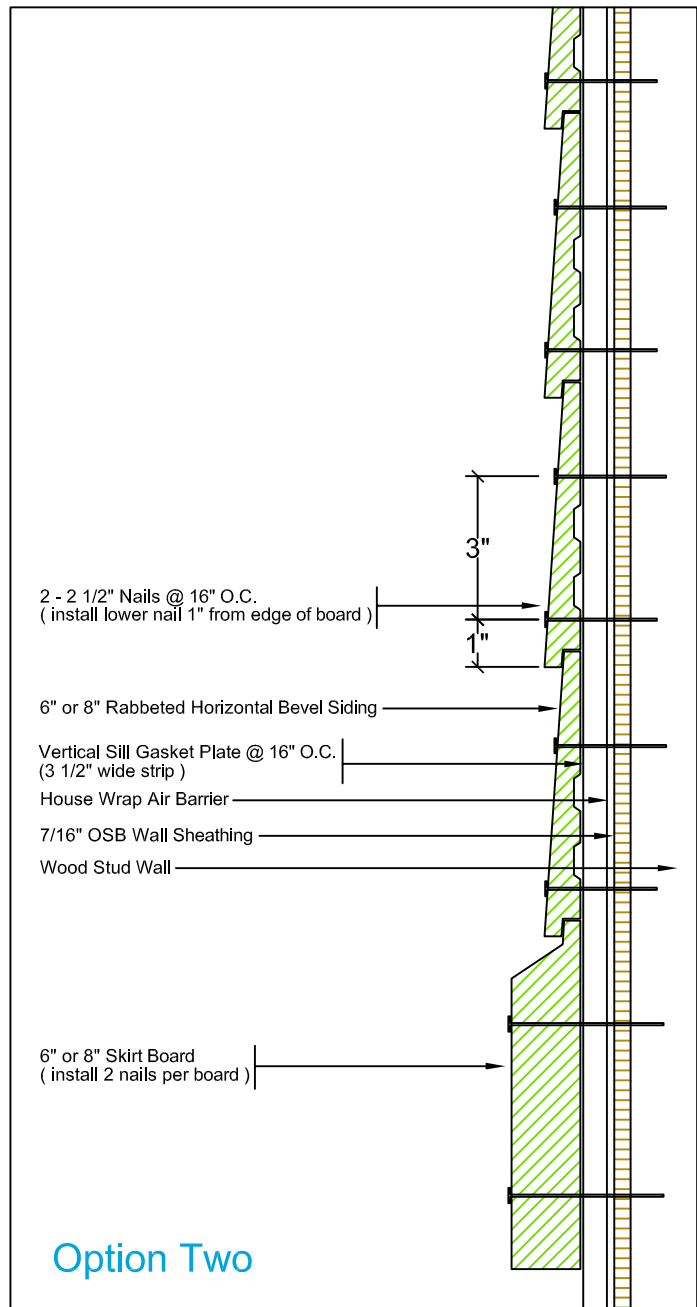
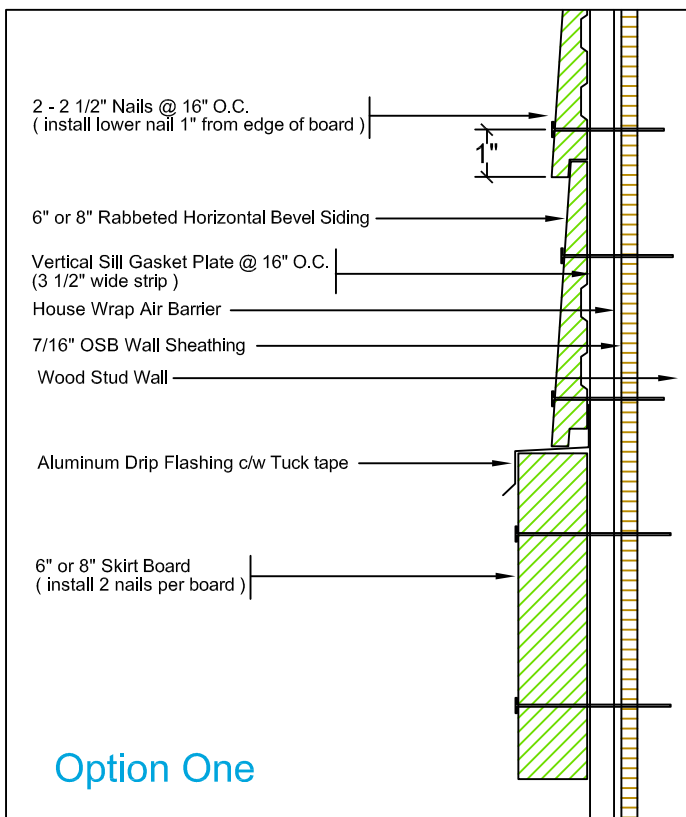
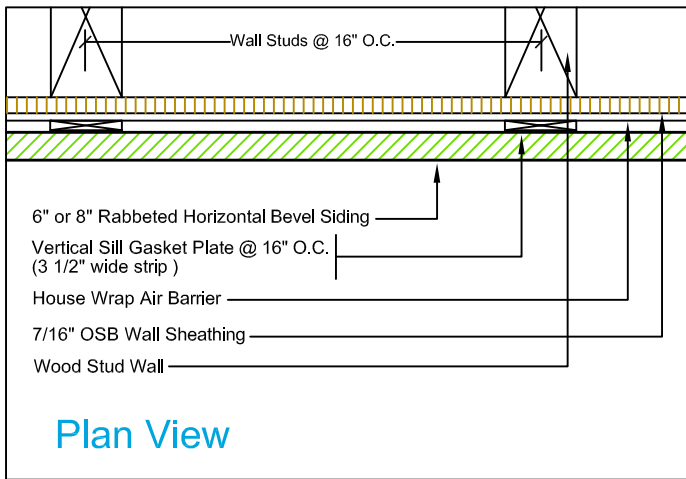


GemThane[®]
WOOD SIDING SYSTEM
A Division of Madison Chemical Industries Inc.

1

GemThane Performance Plus Series (6" + 8" Horizontal Wood Siding)

6" Cove or Rabbeted Bevel, V - Joint Siding (1 Nail @ 1" from edge)
 8" Cove or Rabbeted Bevel, V - Joint Siding (2 Nail @ 1" from edge + 3" apart)

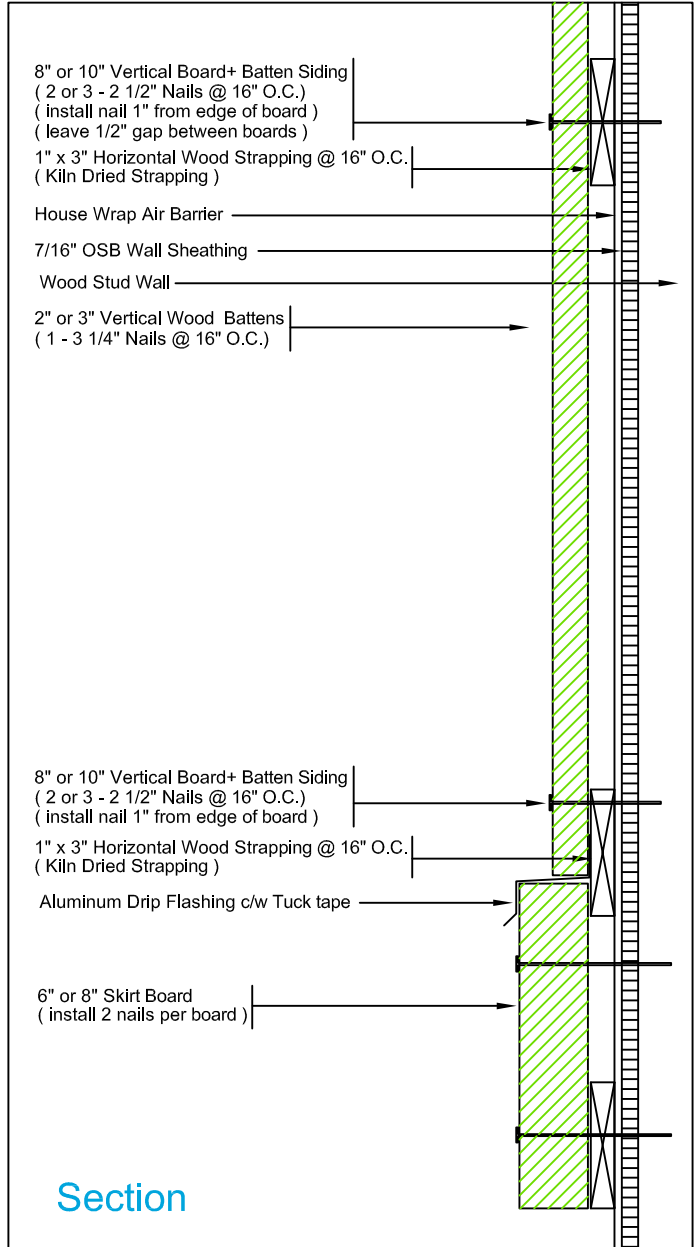
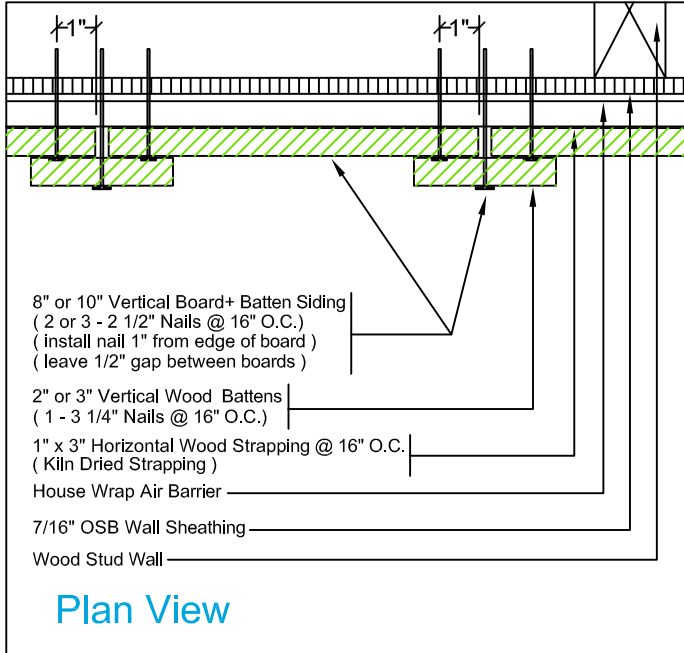


GemThane[®]
 WOOD SIDING SYSTEM
 A Division of Madison Chemical Industries Inc.

2

GemThane Value Plus Series (6" + 8" Vertical Wood Siding)

- 6" Channel and Cove, V - Joint Siding (1 Nail @ 1" from edge of board)
- 8" Channel and Cove, V - Joint Siding (2 Nails @ 1" from edge of board + 3" apart)
- 8" Vertical Board c/w 2 - 2 1/2" Nails @ 16" O.C. (2" or 3" Battens c/w 1 - 3 1/4" Nails @ 16" O.C.)
- 10" Vertical Board c/w 3 - 2 1/2" Nails @ 16" O.C. (2" or 3" Battens c/w 1 - 3 1/4" Nails @ 16" O.C.)

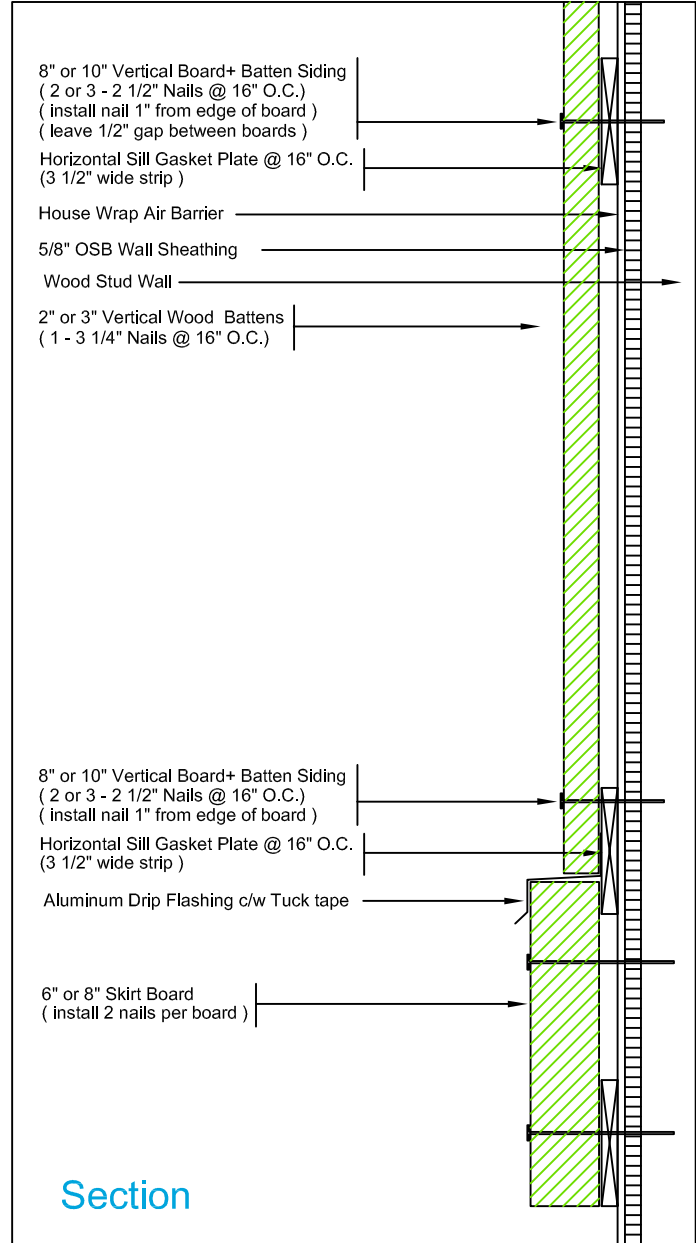
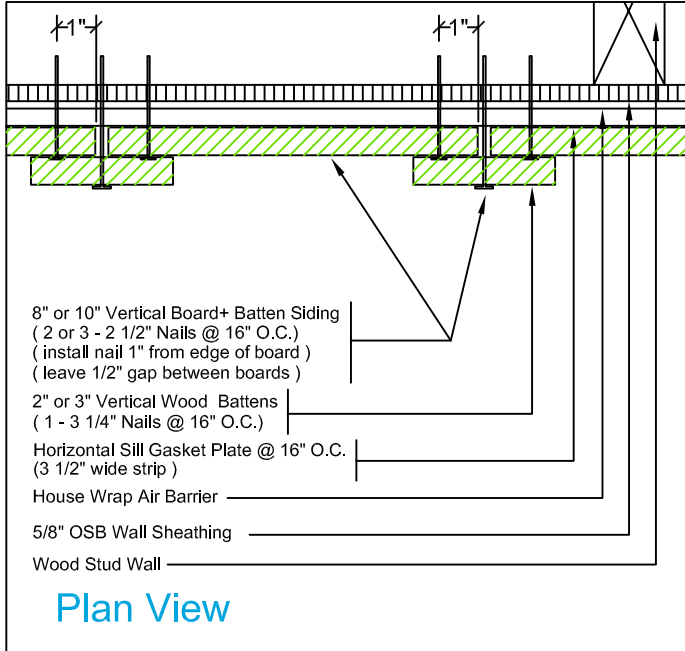


GemThane®
WOOD SIDING SYSTEM
A Division of Madison Chemical Industries Inc.

3

GemThane Performance Plus Series (6" + 8" Vertical Wood Siding)

- 6" Channel and Cove, V - Joint Siding (1 Nail @ 1" from edge of board)
- 8" Channel and Cove, V - Joint Siding (2 Nails @ 1" from edge of board + 3" apart)
- 8" Vertical Board c/w 2 - 2 1/2" Nails @ 16" O.C. (2" or 3" Battens c/w 1 - 3 1/4" Nails @ 16" O.C.)
- 10" Vertical Board c/w 3 - 2 1/2" Nails @ 16" O.C. (2" or 3" Battens c/w 1 - 3 1/4" Nails @ 16" O.C.)



 **GemThane**®
WOOD SIDING SYSTEM
A Division of Madison Chemical Industries Inc.

4

GemThane Wood Siding

Window Trim Installation and Nailing Pattern

